

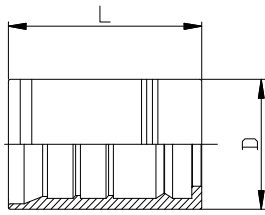


II	INTERLOCK FITTINGS	
GMTB4I	SKIVE FERRULE FOR DIN EN856 4SH - R13 - R15	68
GMTB13	SKIVE FERRULE FOR SAE 100 R13 - R15	68
GMTIFG	BSP FEMALE, 60° CONE WITH O-RING	69
GMTIC90G	BSP SWEPT 90° FEMALE, 60° CONE WITH O-RING	69
GMTIC45G	BSP SWEPT 45° FEMALE, 60° CONE WITH O-RING	70
GMTIMG	BSPP MALE, 60° SEAT	70
GMTIMNPT	NPTF MALE	71
GMTIFJ	JIC FEMALE, 37° SEAT	72
GMTIC90J	JIC SWEPT 90° FEMALE, 37° SEAT	72
GMTIC45J	JIC SWEPT 45° FEMALE, 37° SEAT	73
GMTIMJ	JIC MALE, 37° CONE	73
GMTIFES	METRIC O-RING FEMALE, 24° CONE, DIN 3865 HEAVY	74
GMTIC90ES	METRIC SWEPT 90° O-RING FEMALE, 24° CONE, DIN 3865 HEAVY	74
GMTIC45ES	METRIC SWEPT 45° O-RING FEMALE, 24° CONE, DIN 3865 HEAVY	75
GMTIMES	METRIC MALE, 24° SEAT, DIN 3853 HEAVY	75
GMTIFLPI3	SAE FLANGE 3000 PSI - SAE J518	76
GMTIFLPI6	SAE FLANGE 6000 PSI - SAE J518	76
GMTIFLPI390	SAE FLANGE 3000 PSI SWEPT 90° - SAE J518	77
GMTIFLPI690	SAE FLANGE 6000 PSI SWEPT 90° - SAE J518	77
GMTIFLPI345	SAE FLANGE 3000 PSI SWEPT 45° - SAE J518	78
GMTIFLPI645	SAE FLANGE 6000 PSI SWEPT 45° - SAE J518	78
GMTIFLPIR6	SUPERCAT FLANGE	79
GMTIFLPIR690	SUPERCAT FLANGE SWEPT 90°	80
GMTIFLPIR645	SUPERCAT FLANGE SWEPT 45°	80
GMTIFORFS	ORFS FEMALE	81
GMTIMORFS	ORFS MALE	81
GMTIC90ORFS	ORFS SWEPT 90° FEMALE	82
GMTIC45ORFS	ORFS SWEPT 45° FEMALE	82



GMTB4I

SKIVE FERRULE FOR DIN EN856 4SH - R13 - R15

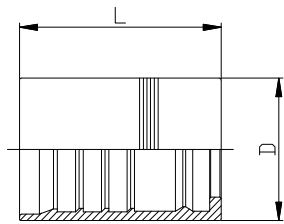


Code article	øins. Hose		Length skive		Dimensions (mm)		Hose Type
	Inch	mm	Inside	Outside	D	L	
GMTB4I12	3/4	20	16,5	52	38	60	4SH-R13-R15
GMTB4I16	1"	25	18	65	46	74,5	4SH-R13-R15
GMTB4I20	1"1/4	32	23	74	55	88	4SH
GMTB4I24	1"1/2	40	23	81	62	94,1	4SH
GMTB4I32	2"	50	30,5	86	78	99,1	4SH



GMTB13

SKIVE FERRULE FOR SAE 100 R13 - R15

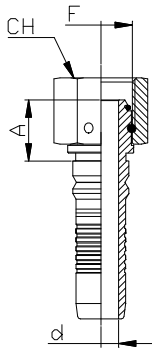


Code article	øins. Hose		Length skive		Dimensions (mm)		Hose Type
	Inch	mm	Inside	Outside	D	L	
GMTB1320	1"1/4	32	23	74	60	88,1	R13-R15
GMTB1324	1"1/2	40	23	82	67	94,1	R13-R15
GMTB1332	2"	50	30,5	85	84,6	99,2	R13-R15



GMTIFG

BSP FEMALE, 60° CONE WITH O-RING

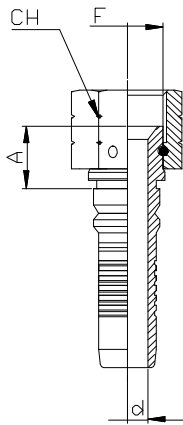


Code article	Thread	øins. Hose		Dimensions (mm)		
		Inch	mm	CH	A	d
GMTIFG1212	3/4	0,75	20	32	24,1	14
GMTIFG1616	1"	1"	25	38	25,1	19
GMTIFG2016	1"1/4	1"	25	50	30,8	19
GMTIFG2020	1"1/4	1"1/4	32	50	34,5	25
GMTIFG2424	1"1/2	1"1/2	40	55	31,1	31
GMTIFG3232	2"	2"	50	70	31,6	42



GMTIFJ

JIC FEMALE, 37° SEAT

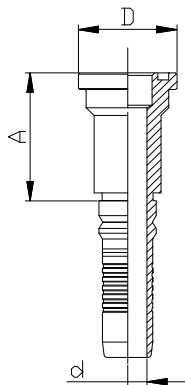


Code article	Thread	øins. Hose		Dimensions (mm)		
		Inch	mm	CH	A	d
GMTIFJ2012	1"1/16-12	3/4	20	32	22,2	14
GMTIFJ2512	1"5/16-12	3/4	20	41	22,3	14
GMTIFJ2516	1"5/16-12	1"	25	41	22,8	20
GMTIFJ3416	1"5/8-12	1"	25	50	23,3	20
GMTIFJ3420	1"5/8-12	1"1/4	32	50	24,5	25
GMTIFJ4020	1"7/8-12	1"1/4	32	55	26,7	25
GMTIFJ4024	1"7/8-12	1"1/2	40	55	27	31
GMTIFJ5032	2"1/2-12	2"	50	70	31,5	42



GMTIFLPI3

SAE FLANGE 3000 PSI - SAE J518

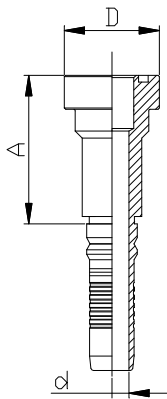


Code article	Flange	øins. Hose		Dimensions (mm)		
		Inch	mm	A	D	d
GMTIFLPI31212	3/4	0,75	20	49,6	38,1	14
GMTIFLPI31612	1"	0,75	20	54,1	44,45	14
GMTIFLPI31616	1"	1"	25	56,2	44,45	19
GMTIFLPI32016	1"1/4	1"	25	59,5	50,8	19
GMTIFLPI32020	1"1/4	1"1/4	32	62,8	50,8	25
GMTIFLPI32420	1"1/2	1"1/4	32	65,5	60,4	25
GMTIFLPI32424	1"1/2	1"1/2	40	66,3	60,4	31
GMTIFLPI33224	2"	1"1/2	40	71,3	71,42	31
GMTIFLPI33232	2"	2"	50	75,5	71,42	42



GMTIFLPI6

SAE FLANGE 6000 PSI - SAE J518

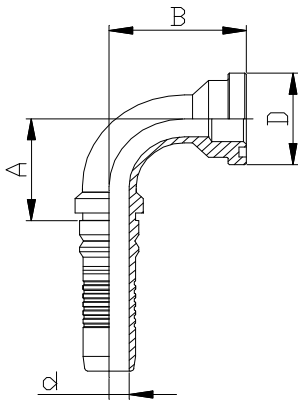


Code article	Flange	øins. Hose		Dimensions (mm)		
		Inch	mm	A	D	d
GMTIFLPI61212	3/4	0,75	20	56,1	41,3	14
GMTIFLPI61612	1"	0,75	20	57,1	47,6	14
GMTIFLPI61616	1"	1"	25	62,2	47,6	19
GMTIFLPI62016	1"1/4	1"	25	64,7	54	19
GMTIFLPI62020	1"1/4	1"1/4	32	68	54	25
GMTIFLPI62420	1"1/2	1"1/4	32	75,8	63,5	25
GMTIFLPI62424	1"1/2	1"1/2	40	76,6	63,5	31
GMTIFLPI63224	2"	1"1/2	40	97,3	79,4	31
GMTIFLPI63232	2"	2"	50	97,3	79,4	42



GMTIFLPI390

SAE FLANGE 3000 PSI SWEPT 90° - SAE J518

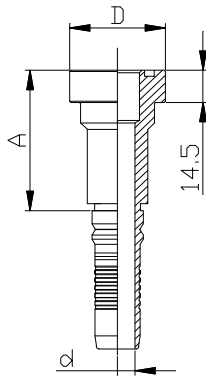


Code article	Flange	øins. Hose		Dimensions (mm)			
		Inch	mm	A	B	D	d
GMTIFLPI390	3/4	0,75	20	54	53	38,1	14
GMTIFLPI390	1"	0,75	20	54	58	44,5	14
GMTIFLPI390	1"	1"	25	69	69	44,5	19
GMTIFLPI390	1"1/4	1"	25	69	75	50,8	19
GMTIFLPI390	1"1/4	1"1/4	32	88	56	50,8	25
GMTIFLPI390	1"1/2	1"1/4	32	88	59	60,4	25
GMTIFLPI390	1"1/2	1"1/2	40	98	87	60,4	31
GMTIFLPI390	2"	1"1/2	40	98	90	71,4	31
GMTIFLPI390	2"	2"	50	122	115	71,4	42



GMTIFLPIR6

SUPERCAT FLANGE

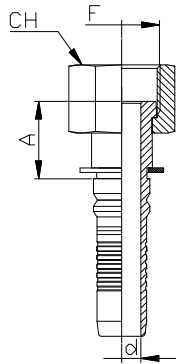


Code article	Flange	øins. Hose		Dimensions (mm)		
		Inch	mm	A	D	d
GMTIFLPIR61212	3/4	0,75	20	55	41,28	14
GMTIFLPR61612	1"	0,75	20	57	47,63	14
GMTIFLPR61616	1"	1"	25	62	47,63	19
GMTIFLPR62016	1"1/4	1"	25	68	53,98	19
GMTIFLPR62020	1"1/4	1"1/4	32	71	54	25



GMTIFORFS

ORFS FEMALE

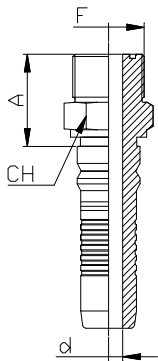


Code article	Thread	øins. Hose		Dimensions (mm)		
		Inch	mm	CH	A	d
GMTIFORFS2212	1"3/16-12	0,75	20	36	34	14
GMTIFORFS2616	1"7/16-12	1"	25	41	37	19
GMTIFORFS3620	1"11/16-12	1"1/4	32	50	40	25
GMTIFORFS4624	2"-12	1"1/2	40	60	41	31



GMTIMORFS

ORFS MALE



Code article	Thread	øins. Hose		Dimensions (mm)		
		Inch	mm	CH	A	d
GMTIMORFS2212	1"3/16-12	0,75	20	32	38,6	14
GMTIMORFS2616	1"7/16-12	1"	25	41	43,5	19
GMTIMORFS3620	1"11/16-12	1"1/4	32	46	46,9	25
GMTIMORFS4624	2"-12	1"1/2	40	55	50,1	31

